

Brown County's Landscape does not have mountains or deep canyons.

However, there are plenty of interesting landforms. A shaded relief map like this one will highlight features of the landscape that you may not have known existed.

Bedrock features

"The Ledge" The Niagara Escarpment is one of the well-known landforms in Brown County. It is most prominent on the map near to the city of Ladysburg.

Ice Age features

Thousands of years ago, the great glaciers of the Ice Age left their marks all over Brown County with many different types of landforms.

Drumlines

One last late sign of past glacial activity is a landform known as a "drumlin". These streamlined, elongated hills tell a lot about a glacier.

Moraines

Ice sheets retreated and again advanced. This most "recent" ice sheet advanced as far as the south as the present-day location of the Wisconsin-Michigan border.

Wind-blown sand dunes

Large areas of wind-blown sand dunes up to 345 feet thick were deposited near the end of the Wisconsinan Stage (11,000 years ago).

11,000 year old trees

Prior to the final advance of ice across Brown County, a dense forest of trees grew in the area.

Features left by the final advance of glacial ice

The last advance of ice across Brown County left behind a variety of features that are still visible today.

High water

Liquid water also played a major role in shaping Brown County. In addition to the modern rivers, lakes and streams that erode or deposit sediments today, there are several interesting events in natural history that are evident on the map.

Glacial lakes and abandoned outflow channels

Whenever the natural drainage of water to the north was blocked by thick glaciers in the Bay, water pooled against the ice in the Fox River Lowland forming "proglacial lakes".

Abandoned Shorelines

Long after the glaciers retreated back into Canada, there were other natural processes that caused the water levels of Lake Michigan and the Bay to fluctuate.

Human impacts to the landscape

Humans have also impacted the landscape features of the County. Quarries are visible at L74, P-13 and several other places where people have mined the bedrock of the Niagara Escarpment.

Waterborne Commerce

Canal pits at M-13, M-10 and M-13 mark it on this map. These large canal pits help to fuel the paper industry and are left by ships between 1800 and 1850.

Airport

The runways of Austin Straubel International Airport can be seen at L-104, H-104, and H-20.

Map last updated January 2011

Transverse Mapper Projection Brown County Coordinate System NAD83 - FIPS adjustment

GIS / Cartographic coordinator: Jeff Duhé, GIS/LIO Coordinator

Brown County Land Information Office (820) 448-6295

For additional copies of this map, contact the Land Information Office at the phone number above or visit: www.co.brown.wi.us/land\_information\_office/

This map and accompanying text are a compilation and interpretation of the data available at the time of preparation. Every reasonable effort has been made to ensure that the information compiled is accurate and complete. However, the user of this map should not be used for public safety decisions without verification. The user of this map is the sole responsibility of the user.

Map last updated January 2011

Transverse Mapper Projection Brown County Coordinate System NAD83 - FIPS adjustment

GIS / Cartographic coordinator: Jeff Duhé, GIS/LIO Coordinator

Brown County Land Information Office (820) 448-6295

For additional copies of this map, contact the Land Information Office at the phone number above or visit: www.co.brown.wi.us/land\_information\_office/

This map and accompanying text are a compilation and interpretation of the data available at the time of preparation. Every reasonable effort has been made to ensure that the information compiled is accurate and complete. However, the user of this map should not be used for public safety decisions without verification. The user of this map is the sole responsibility of the user.

Map last updated January 2011

Transverse Mapper Projection Brown County Coordinate System NAD83 - FIPS adjustment

GIS / Cartographic coordinator: Jeff Duhé, GIS/LIO Coordinator

Brown County Land Information Office (820) 448-6295

For additional copies of this map, contact the Land Information Office at the phone number above or visit: www.co.brown.wi.us/land\_information\_office/

This map and accompanying text are a compilation and interpretation of the data available at the time of preparation. Every reasonable effort has been made to ensure that the information compiled is accurate and complete. However, the user of this map should not be used for public safety decisions without verification. The user of this map is the sole responsibility of the user.

Map last updated January 2011

Transverse Mapper Projection Brown County Coordinate System NAD83 - FIPS adjustment

GIS / Cartographic coordinator: Jeff Duhé, GIS/LIO Coordinator

Brown County Land Information Office (820) 448-6295

For additional copies of this map, contact the Land Information Office at the phone number above or visit: www.co.brown.wi.us/land\_information\_office/

This map and accompanying text are a compilation and interpretation of the data available at the time of preparation. Every reasonable effort has been made to ensure that the information compiled is accurate and complete. However, the user of this map should not be used for public safety decisions without verification. The user of this map is the sole responsibility of the user.

Map last updated January 2011

Transverse Mapper Projection Brown County Coordinate System NAD83 - FIPS adjustment

GIS / Cartographic coordinator: Jeff Duhé, GIS/LIO Coordinator

Brown County Land Information Office (820) 448-6295

For additional copies of this map, contact the Land Information Office at the phone number above or visit: www.co.brown.wi.us/land\_information\_office/

This map and accompanying text are a compilation and interpretation of the data available at the time of preparation. Every reasonable effort has been made to ensure that the information compiled is accurate and complete. However, the user of this map should not be used for public safety decisions without verification. The user of this map is the sole responsibility of the user.

Map last updated January 2011

Transverse Mapper Projection Brown County Coordinate System NAD83 - FIPS adjustment

GIS / Cartographic coordinator: Jeff Duhé, GIS/LIO Coordinator

Brown County Land Information Office (820) 448-6295

For additional copies of this map, contact the Land Information Office at the phone number above or visit: www.co.brown.wi.us/land\_information\_office/

This map and accompanying text are a compilation and interpretation of the data available at the time of preparation. Every reasonable effort has been made to ensure that the information compiled is accurate and complete. However, the user of this map should not be used for public safety decisions without verification. The user of this map is the sole responsibility of the user.

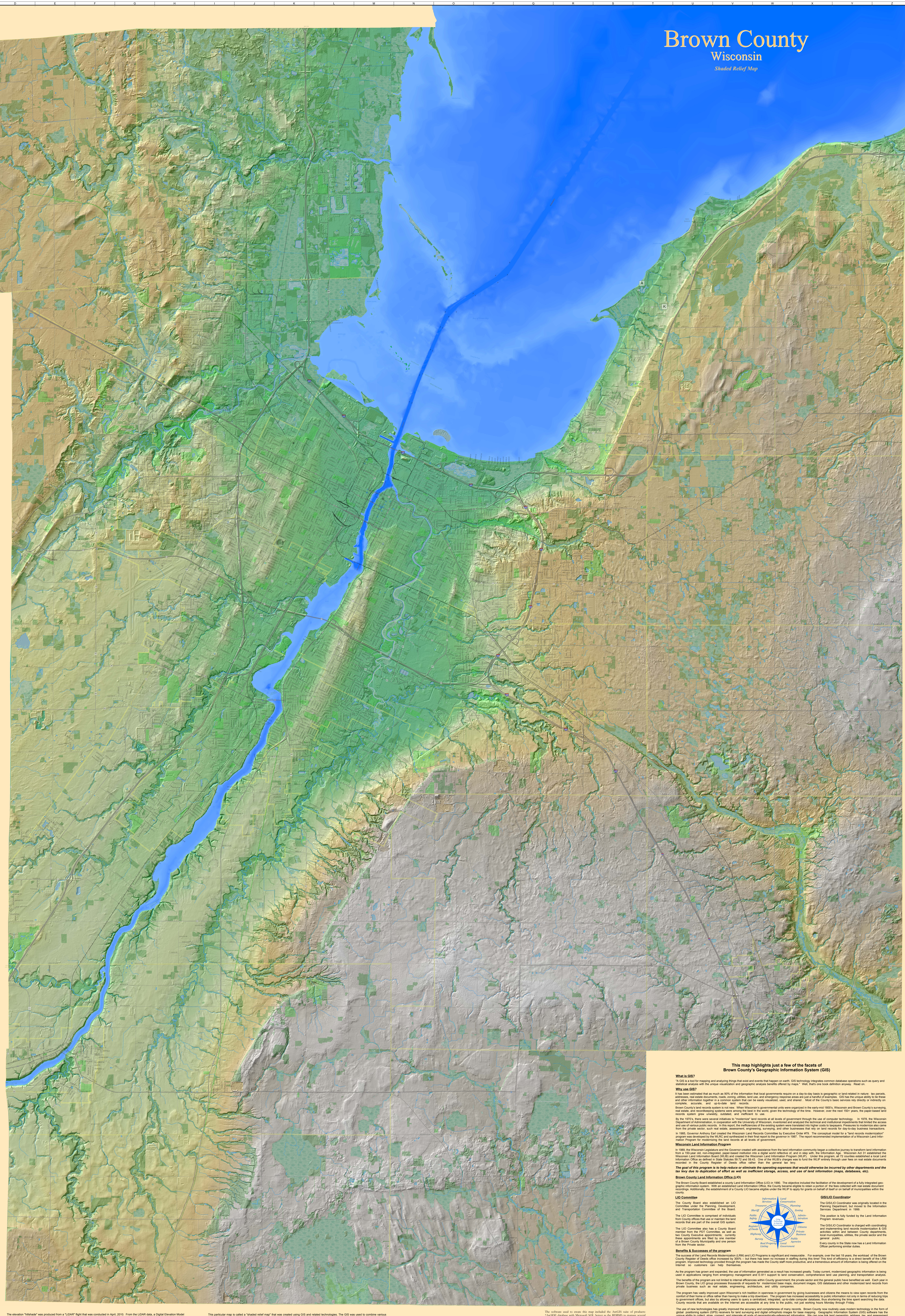
Map last updated January 2011

Transverse Mapper Projection Brown County Coordinate System NAD83 - FIPS adjustment

GIS / Cartographic coordinator: Jeff Duhé, GIS/LIO Coordinator

Brown County Land Information Office (820) 448-6295

For additional copies of this map, contact the Land Information Office at the phone number above or visit: www.co.brown.wi.us/land\_information\_office/



This map highlights just a few of the facets of Brown County's Geographic Information System (GIS)

What is GIS? A GIS is a tool for mapping and analyzing things that exist and events that happen on earth. GIS technology requires common database operations such as query and analysis.

Why use GIS? It has been estimated that as much as 80% of the information that local governments require on a day-to-day basis is geographic or location-related in nature.

Wisconsin Land Information Program The Wisconsin Department of Administration, in cooperation with the University of Wisconsin, developed and adopted the Wisconsin Land Information Program (WLIP).

Benefits & Successes of the program The Wisconsin Department of Administration (DAS) and the Wisconsin Land Information Office (WLIO) have been successful in many ways.

As the program has grown, the amount of information generated as a result of the program has increased greatly. Today, current, modernized geographic information is being used in applications ranging from emergency management and GIS support to land conservation, comprehensive land planning, and transportation analysis.

The program has been successful in many ways. For example, over the last 18 years, the workload of the Brown County Register of Deeds office increased by 300%, but there has been no increase in staffing during this time.

The program has been successful in many ways. For example, over the last 18 years, the workload of the Brown County Register of Deeds office increased by 300%, but there has been no increase in staffing during this time.

The program has been successful in many ways. For example, over the last 18 years, the workload of the Brown County Register of Deeds office increased by 300%, but there has been no increase in staffing during this time.

The program has been successful in many ways. For example, over the last 18 years, the workload of the Brown County Register of Deeds office increased by 300%, but there has been no increase in staffing during this time.

The program has been successful in many ways. For example, over the last 18 years, the workload of the Brown County Register of Deeds office increased by 300%, but there has been no increase in staffing during this time.

The program has been successful in many ways. For example, over the last 18 years, the workload of the Brown County Register of Deeds office increased by 300%, but there has been no increase in staffing during this time.

The program has been successful in many ways. For example, over the last 18 years, the workload of the Brown County Register of Deeds office increased by 300%, but there has been no increase in staffing during this time.

The program has been successful in many ways. For example, over the last 18 years, the workload of the Brown County Register of Deeds office increased by 300%, but there has been no increase in staffing during this time.

The program has been successful in many ways. For example, over the last 18 years, the workload of the Brown County Register of Deeds office increased by 300%, but there has been no increase in staffing during this time.

The program has been successful in many ways. For example, over the last 18 years, the workload of the Brown County Register of Deeds office increased by 300%, but there has been no increase in staffing during this time.

The program has been successful in many ways. For example, over the last 18 years, the workload of the Brown County Register of Deeds office increased by 300%, but there has been no increase in staffing during this time.

The program has been successful in many ways. For example, over the last 18 years, the workload of the Brown County Register of Deeds office increased by 300%, but there has been no increase in staffing during this time.

The program has been successful in many ways. For example, over the last 18 years, the workload of the Brown County Register of Deeds office increased by 300%, but there has been no increase in staffing during this time.

The program has been successful in many ways. For example, over the last 18 years, the workload of the Brown County Register of Deeds office increased by 300%, but there has been no increase in staffing during this time.

The program has been successful in many ways. For example, over the last 18 years, the workload of the Brown County Register of Deeds office increased by 300%, but there has been no increase in staffing during this time.