

2025 CWM
18-782-E = PS
18-782-E-1 = NPL

3062971

CERTIFIED SURVEY MAP

PART OF THE LAVENTURE CLAIM, WEST SIDE OF FOX RIVER,
CITY OF GREEN BAY, BROWN COUNTY, WISCONSIN

MAP# 9749
CHERYL BERKEN
BROWN COUNTY
REGISTER OF DEEDS
GREEN BAY, WI
RECORDED ON
05/02/2024 02:17 PM
REC FEE:
REC FEE: 30.00
PAGES: 4

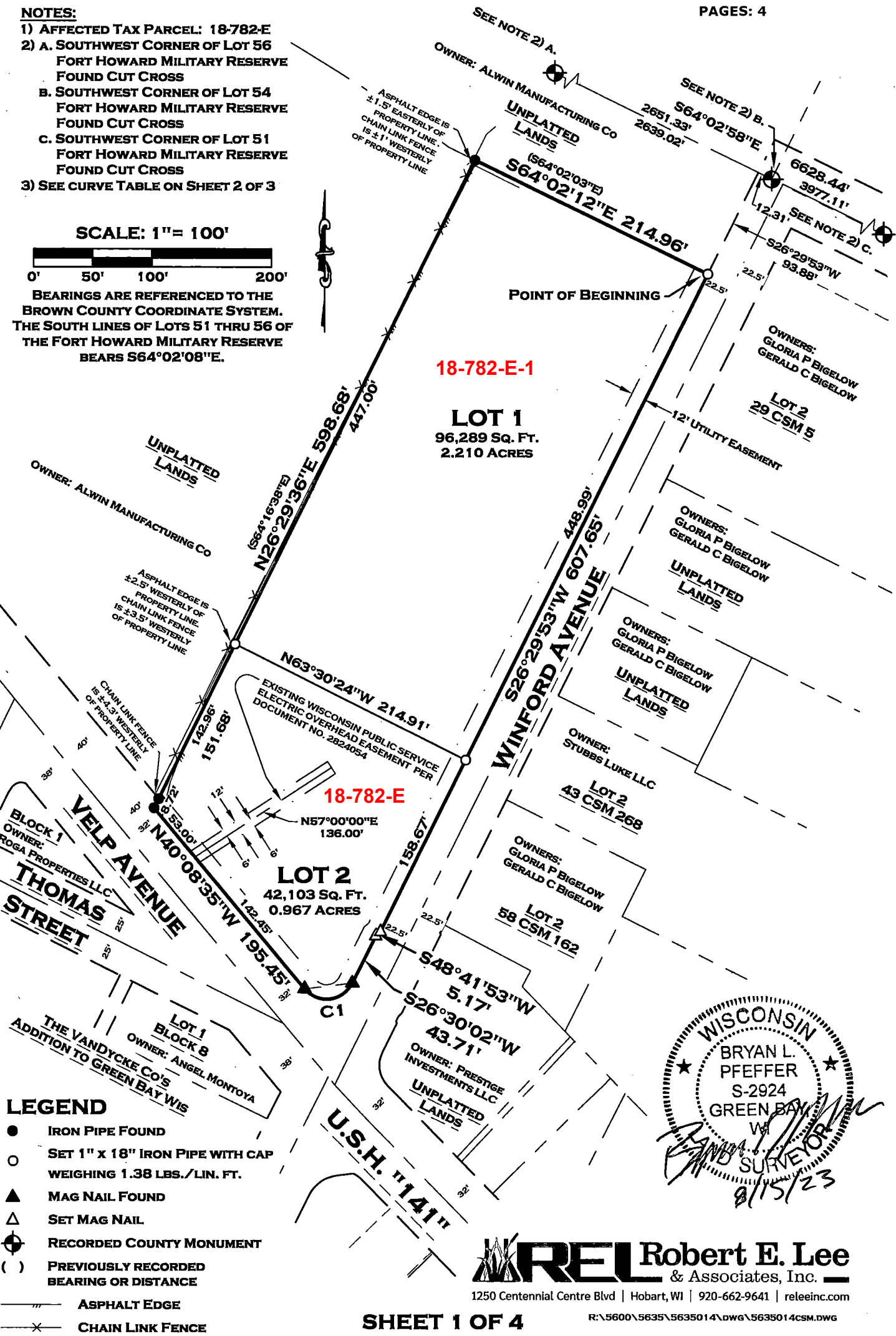
NOTES:

- 1) AFFECTED TAX PARCEL: 18-782-E
- 2) A. SOUTHWEST CORNER OF LOT 56
FORT HOWARD MILITARY RESERVE
FOUND CUT CROSS
B. SOUTHWEST CORNER OF LOT 54
FORT HOWARD MILITARY RESERVE
FOUND CUT CROSS
C. SOUTHWEST CORNER OF LOT 51
FORT HOWARD MILITARY RESERVE
FOUND CUT CROSS
- 3) SEE CURVE TABLE ON SHEET 2 OF 3

SCALE: 1" = 100'



BEARINGS ARE REFERENCED TO THE
BROWN COUNTY COORDINATE SYSTEM.
THE SOUTH LINES OF LOTS 51 THRU 56 OF
THE FORT HOWARD MILITARY RESERVE
BEARS S64°02'08"E.



LEGEND

- IRON PIPE FOUND
- SET 1" x 18" IRON PIPE WITH CAP
WEIGHING 1.38 LBS./LIN. FT.
- ▲ MAG NAIL FOUND
- △ SET MAG NAIL
- ⊙ RECORDED COUNTY MONUMENT
- () PREVIOUSLY RECORDED
BEARING OR DISTANCE
- ASPHALT EDGE
- CHAIN LINK FENCE

REL Robert E. Lee
& Associates, Inc.

1250 Centennial Centre Blvd | Hobart, WI | 920-662-9641 | releinc.com

R:\5600\5635\5635014\DWG\5635014CSM.DWG

SHEET 1 OF 4