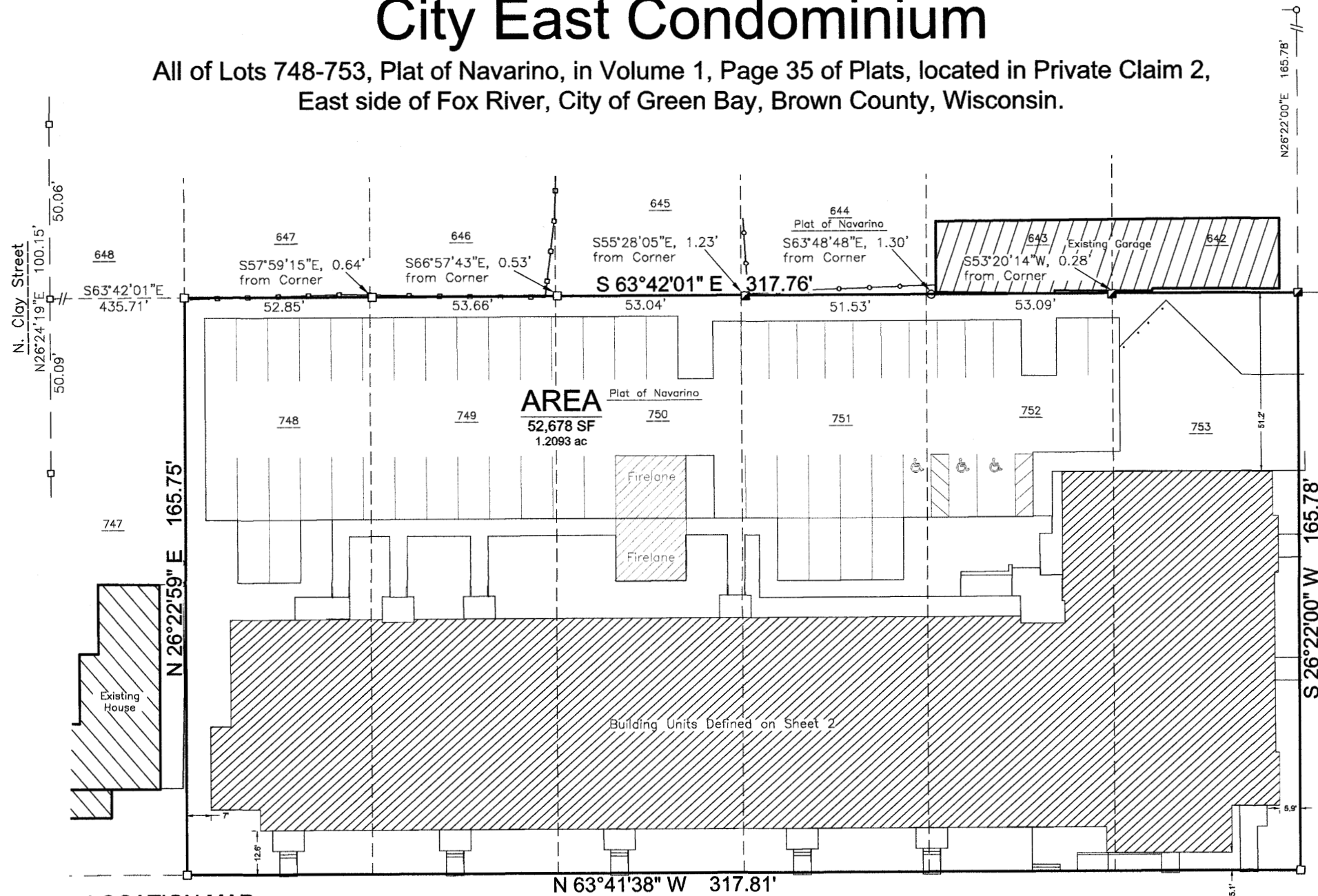


City East Condominium

All of Lots 748-753, Plat of Navarino, in Volume 1, Page 35 of Plats, located in Private Claim 2,
East side of Fox River, City of Green Bay, Brown County, Wisconsin.



Northeast Corner
Private Claim 2, ESFR
Cut Cross, Found

3067562

CHERYL BERKEN
BROWN COUNTY
REGISTER OF DEEDS
GREEN BAY, WI
RECORDED ON
06/27/2024 03:16 PM
REC FEE: 50.00
PAGES: 3

Southeast Corner
Private Claim 2, ESFR
Masonry Nail W/Washer, Found

Notes:

Limited Common Elements are depicted on this plat as "LCE".

Limited Common Elements Include:
Patios, Service Walks, Stoops and Driveways

All areas within the condominium boundary are Common
Elements unless depicted as "Unit" or "LCE".

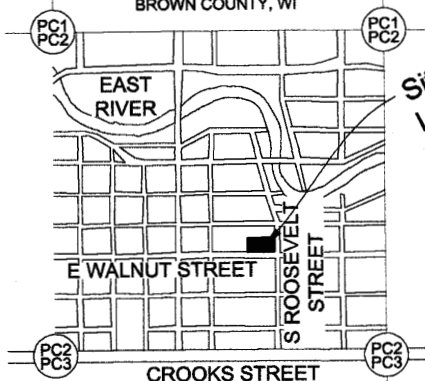
Surveyor's Certificate

I, Scott R. Andersen, Professional Land Surveyor, do hereby
certify that this plat is a correct representation of the
condominium described and that the identification and
location of each unit, limited common elements, and the
common elements can be determined from this plat.

WISCONSIN
SCOTT R. ANDERSEN
S-3169
OMRO
LAND SURVEYOR
6/22/24
Scott R. Andersen PLS No. S-3169 Date
scott@davel.pro

LOCATION MAP

Part of Private Claim 2, ESFR
CITY OF GREEN BAY
BROWN COUNTY, WI



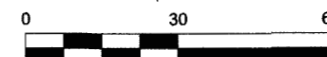
Site Location
NO SCALE

E. Walnut Street

2025 TLL
14-198 RPL
14-1508 & 14-1509 NPL

LEGEND

- 3/4" Rebar Found
- 1.3" O.D. Iron Pipe Found
- 2.3" O.D. Iron Pipe Found
- Government Corner



Bearings are referenced to the East line of
Private Claim 2, ESFR, assumed to bear
S26°05'25"W, base on the Brown County
Coordinate System.

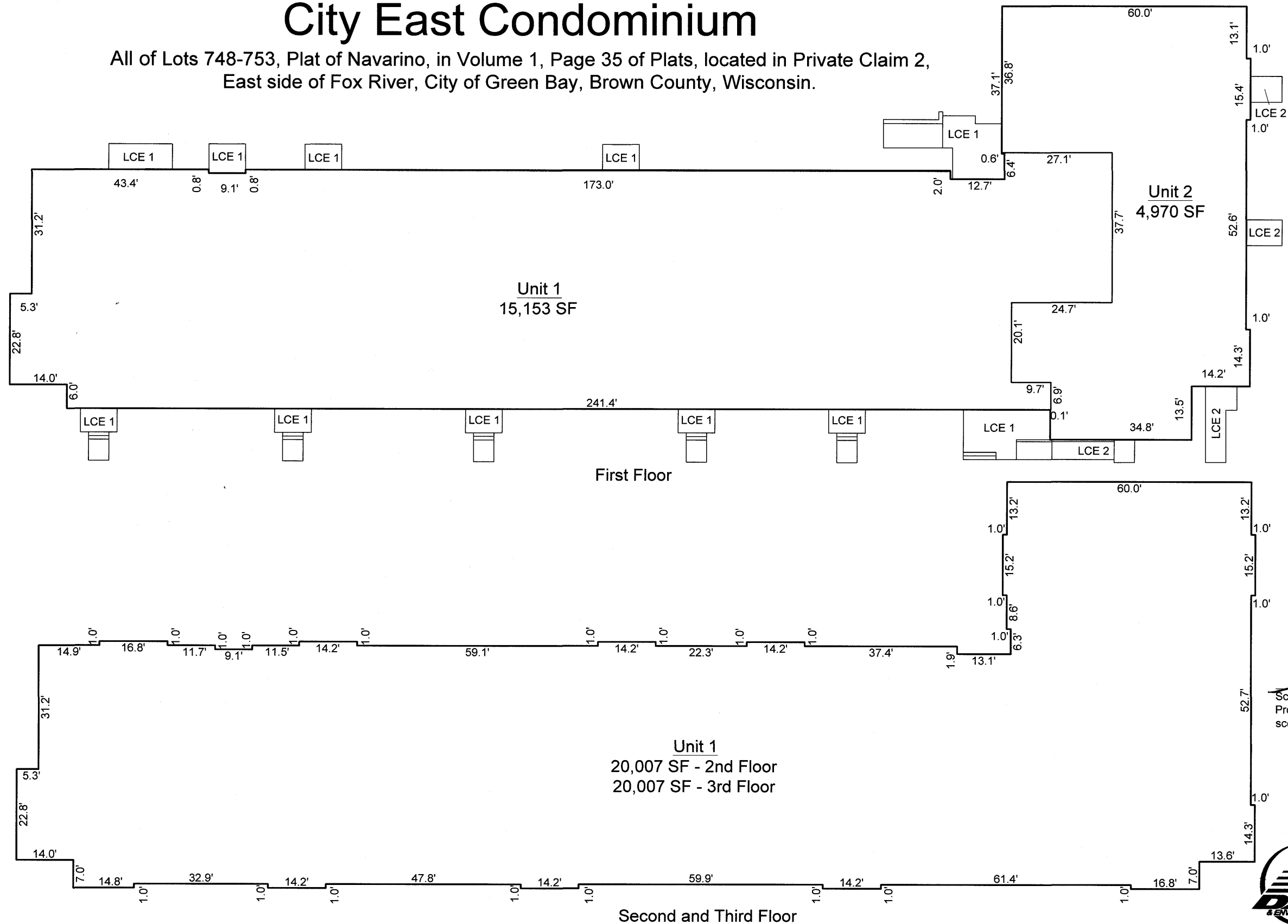
File: 7485C-Plat.dwg
Date: 06/26/2024
Drafted By: scott
Sheet: 1 of 3



DAVEL ENGINEERING &
ENVIRONMENTAL, INC.
Civil Engineers and Land Surveyors
1164 Province Terrace, Menasha, WI 54952
Ph: 920-991-1866 Fax: 920-441-0804
www.davel.pro

City East Condominium

All of Lots 748-753, Plat of Navarino, in Volume 1, Page 35 of Plats, located in Private Claim 2,
East side of Fox River, City of Green Bay, Brown County, Wisconsin.



Notes:

Limited Common Elements are depicted on this plat as "LCE 1" for Unit 1.

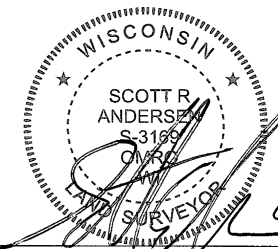
Limited Common Elements are depicted on this plat as "LCE 2" for Unit 2.

Limited Common Elements Include:
Patios, Service Walks, Stoops and Driveways

All areas within the condominium boundary are Common Elements unless depicted as "Unit" or "LCE".

Unit Areas listed are per Architectural plans dated 05/05/2023

Total Unit 1 area is 55,167 Square Feet



Scott R. Andersen Date
Professional Land Surveyor S-3169
scott@davel.pro

File: 7485C-Plat.dwg
Date: 06/04/2024
Drafted By: scott
Sheet: 2 of 3



DAVEL ENGINEERING & ENVIRONMENTAL, INC.
Civil Engineers and Land Surveyors
1164 Province Terrace, Menasha, WI 54952
Ph: 920-991-1866 Fax: 920-441-0804
www.davel.pro

City East Condominium

All of Lots 748-753, Plat of Navarino, in Volume 1, Page 35 of Plats, located in Private Claim 2, East side of Fox River, City of Green Bay, Brown County, Wisconsin.

Parcel Description

All of Lots 748-753, Plat of Navarino, in Volume 1, Page 35 of Plats, located in Private Claim 2, East side of Fox River, City of Green Bay, Brown County, Wisconsin, containing 52,678 Square Feet (1.2093 Acres) of land more or less subject to all easements and restrictions of record.

City of Green Bay Planning Commission Certificate

Resolved, that this Condominium Plat, in the City of Green Bay, Brown County, City East Apartments, LLC, the property owner, is hereby approved by the City of Green Bay.

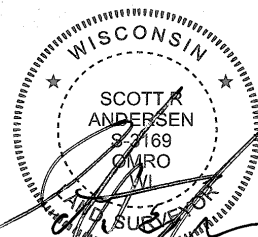
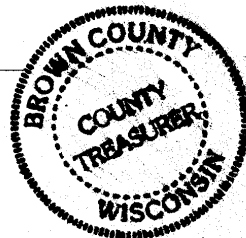
Cheryl Renier-Wigg 6-25-24
Cheryl Renier-Wigg, Date
Community and Economic Development Director

Treasurer's Certificate

Being the duly elected, qualified and acting Treasurer of Brown County, do hereby certify that in accordance with the records in my office, there are no unredeemed tax sales and unpaid taxes, or special assessments on any of the land included in this Condominium Plat.

Charles T. Mahlich
County Treasurer
County Deputy Treasurer

6/25/24
Date



Scott R. Andersen
Professional Land Surveyor S-3169
scott@davel.pro

6/22/24
Date

County Planning Agency Approval Certificate

There are no objections to this Condominium Plat with respect to Sec. 703.115 Wis. Stats. and it is hereby approved for the Brown County Planning Commission.

Dates this 26TH day of JUNE, 20 24

Ryan L. Duckart
Ryan L. Duckart, Brown County Property Lister

Owner's Certificate

As the property owner, I hereby certify that we caused the land described on this Condominium Plat to be surveyed and mapped all as shown and represented on this map.

Dated this 13TH day of June, 20 24

City East Apartments, LLC,

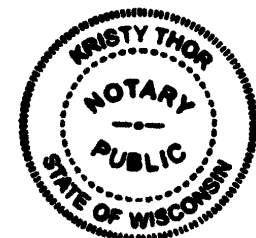
By: City East Managing Member, LLC
A Wisconsin limited liability company, its manager

By: MF Holdings, LLC,
A Wisconsin limited liability company, its manager

By: Nonscareil Management, LLC,
A Wisconsin limited liability company, its manager

Marissa Downs
Marissa Downs, Manager
City East Apartments, LLC

State of Wisconsin)
)SS
Calumet County)



Personally came before me on the 13TH day of June, 20 24,
the above the property owner(s) to me known to be the persons who executed the foregoing
instrument and acknowledge the same.

Notary Public My Commission Expires 9/20/2027
Notary Public, Wisconsin

This Condominium is contained wholly within the property described in the following recorded instruments:

The property owners of record:
City East Apartments, LLC

Recording Information:
Doc. 3041552

Parcel Number(s):
14-198

DAVEL ENGINEERING & ENVIRONMENTAL, INC.
Civil Engineers and Land Surveyors
1164 Province Terrace, Menasha, WI 54952
Ph: 920-991-1866 Fax: 920-441-0804
www.davel.pro